






Student Lettings & Professional Sharers List 2014/15

- Properties are taken on a first come first served basis.
- The first group to lay their full deposit of £400 each and complete application forms will secure the property.
- Remember your deposit reserves the property for you. If you change your mind before the tenancy starts, you will forfeit your deposit. Please make sure you are certain of your obligation.

This student list is designed to make finding your perfect student house quick and easy:

- Houses are listed by the number of bedrooms
- In rent order starting from the lowest
- Distances from each university are listed
- Colour coded map locations

	Town Houses
	Christchurch Uni – College - UCCA Houses
	UKC Houses

The map is at the back of this list.

Full application forms and all tenancy information is available on our website: [www.iconnproperties.co.uk /students](http://www.iconnproperties.co.uk/students)

If you have any questions regarding any of the properties or the student lettings process then please contact us.

We look forward to meeting you and wish you luck in your househunting.

iConn Property Management

For viewings please contact the Castle Street office on 01227 765008

STUDENT ACCOMMODATION 2014/15 TERMS & CONDITIONS

1. A standard tenancy will run from 01st July 2014 to 30th June 2015, with the first two months, July & August, payable at half rent with no right of occupation. **Please note some properties have a different tenancy start date and full rent is payable as shown.**
2. **Due upon application** - New applicants will be required to provide a Security Deposit of £400.00 each upon submission of the application form. The property shall remain on the accommodation list until all applicants' deposits have been received. Existing (2013/14) tenants wishing to renew their tenancy for 2014/15 may transfer their Security Deposits to the new tenancy but will be required to pay a new deposit if applying for a different property let by iConn. Should the application for the tenancy not proceed or complete by the given timescales provided, the application will be deemed to have lapsed and the property will be returned to our 2014/15 accommodation list with all monies already paid, including carried forward Deposits (excluding rent), being forfeited. **Please note some properties may require a different deposit amount as shown.**
3. **Due by 31st March 2014** - Each applicant shall provide a Guarantor and a Guarantor agreement must be completed and signed.
4. **Due by 01st April 2014** - An Administration Fee of £100.00 plus vat = (£120.00) for each new applicant is payable as well as £15.00 plus vat = (£18.00) for the TDS deposit protection. Existing tenants (2013/14) have a reduced admin fee of £50.00 plus vat each = (£60.00) and £7.50 plus vat = (£9.00) each for TDS deposit protection.
5. **Due by 01st April 2014** – All standing order forms for rent are to be returned and all photo ID's of each applicant are to be provided.
6. **Due within 10 Days after application being made** - We require the Tenancy Agreement to be signed by all named tenants.
7. **Due by 01st June 2014** - Payment of July & August rent to be paid in full.

Should payment by one, any or all of the group not be received by the above stated dates or should the completed agreement and standing order not be completed or received or should one, any or all of the group withdraw, the application will be deemed to have lapsed and the property will be returned to our 2014/15 accommodation list with all monies already paid, including carried forward Deposits (excluding rent), being forfeited.

For viewings please contact the Castle Street office on 01227 765008

8. Rent for the period 01st September 2014 – 30th June 2015 is payable monthly in advance by Standing Order on the first day of each month, commencing 01st September 2014.
9. All Applicants will be signed into a 'Joint and Several' fixed term tenancy agreement.
10. Should one, any or all of the group wish to occupy the property during July and/or August, full rent for the property will be payable. Please note the date of occupation would need to be discussed and agreed in advance.

Tenants' possessions are not covered under the landlord's insurance policies and we would recommend that you have your own suitable cover in place; ideally one which includes accidental damage to the Landlords items, as this will help protect your deposit. Please ensure that you inform your Insurance Company of your Joint and Several tenancy and that individual bedroom locks are not provided.

MANAGED BY: iConn Property Management.

This property is under the management of iConn Ltd, which means that all maintenance, tenancy and rent issues during the term of your tenancy will be dealt with by iConn Ltd direct.

MANAGED BY: The Landlord.

This property is under the management of the Landlord, which means that once you have moved into the property; all maintenance, tenancy and rent issues during the term of your tenancy will be dealt with by your Landlord direct.

One Bedroom

OLD PARK COURT, CANTERBURY, KENT, CT1 1DW

£625PCM (£625PP)



Ground floor one double bedroom **unfurnished** flat with open plan living and kitchen area, electric cooker, washing machine and fridge included. Good sized bathroom and a double bedroom. Prepayment electric meter in place. Full rent payable from the 5th July

CC - 1.5 Miles - UKC - 2.9 Miles

Map Location: 8

MANAGED BY: iConn

ROMAN ROW, CANTERBURY, KENT, CT1 2QA

£860PCM (£860PP)



One bed **furnished** new build apartment situated in the city centre. Open plan sitting room with integrated kitchen, one double bedroom with fitted cupboard and bathroom. Full rent payable and occupation from 5th July.

CC - 0.5 Miles UKC - 3.3 Miles

Map Location: 20

MANAGED BY: The Landlord

For viewings please contact the Castle Street office on 01227 765008

Two Bedrooms

MILL LANE, CANTERBURY, KENT, CT2 8AS

£745PCM (£372.50PP)



MANAGED BY: iConn

First floor two bed **unfurnished** apartment with Sitting room, kitchen, bathroom, one double sized bedroom and one single bedroom. Small enclosed garden. Occupation from 5th July.

CC – 1.8 Miles UKC – 2.3 Miles

Map Location: 36

CHURCH STREET, CANTERBURY, KENT, CT2 8AS

£825PCM (£412.50PP)



MANAGED BY: iConn

Two bed **furnished** house with fitted kitchen, sitting room, two double sized bedrooms, bathroom with overhead shower & garden.

CC – 1.5 Miles UKC – 1.8 Miles

Map Location: 1

KIRBYS LANE, CANTERBURY, KENT, CT2 8AG (1)

£825PCM (£412.50PP)



MANAGED BY: iConn

Two bed **furnished** house with fully fitted kitchen, sitting room, one double sized bedroom, one single bedroom, bathroom with overhead shower.

CC – 1.5 Miles UKC – 2 Miles

Map Location: 33

KIRBYS LANE, CANTERBURY, KENT, CT2 8AG (2)

£825PCM (£412.50PP)



MANAGED BY: iConn

Two bed **furnished** house with fully fitted kitchen, sitting room, one double sized bedroom, one single bedroom, bathroom with overhead shower.

CC – 1.5 Miles UKC – 2 Miles

Map Location: 33

For viewings please contact the Castle Street office on 01227 765008

OATEN HILL, CANTERBURY, KENT, CT1 3HY

£825PCM (£412.50PP)



Two bed **furnished** apartment with fully fitted kitchen, sitting room, one double sized bedrooms, one single sized bedroom and bathroom.

CC – 0.3 Miles UKC – 2.9 Miles

Map Location: 14

MANAGED BY: iConn

ST STEPHENS CLOSE, CANTERBURY, KENT,

£840PCM (£420PP)



Two bed **furnished** house with fully fitted kitchen, sitting room/dining room, two double sized bedrooms, storage room, bathroom with overhead shower. Prepayment gas and electric meters in place. ***GARDENER INCLUDED***

CC – 1.3 Miles UKC – 1.5 Miles

Map Location: 45

MANAGED BY: iConn

WILLOUGHBY COURT, CANTERBURY, KENT, CT1 2QW

£860PCM (£430PP)



Two bed **furnished** ground floor apartment located in the city centre suitable for mature students. Accommodation comprises of two double sized bedrooms, good sized living room and separate fully fitted kitchen, bathroom with overhead shower. Occupation from 5th July. **MATURE STUDENT PROPERTY.**

CC - 0.5 Miles UKC - 3.3 Miles

Map Location: 53

MANAGED BY: The Landlord

Three Bedrooms

REED AVENUE, CANTERBURY, KENT, CT1 1ET

£930PCM (£310PP)



MANAGED BY: iConn

Three bed **furnished** house with a good size sitting room, kitchen, ground floor bathroom with overhead shower, two double sized bedrooms, one single sized bedroom, garden and off road parking for one vehicle.

CC – 1.4 Miles - UKC – 2.5 Miles

Map Location: 9

OLD PARK AVENUE, CANTERBURY, KENT, CT1 1DL

£1040PCM (£346.66PP)



MANAGED BY: The Landlord

Three bed **furnished** house with a good size sitting room, kitchen with white goods, three double sized bedrooms, shower room, ground floor cloak room, large garden with storage shed, off road parking.

CC - 1.5 Miles - UKC - 2.9 Miles

Map Location: 2

LANSDOWN ROAD, CANTERBURY, KENT, CT1 3JP

£1040PCM (£346.66)



MANAGED BY: iConn

Three bed **furnished** house with fitted kitchen, sitting room, converted cellar for storage, two double sized bedrooms, one single size bedroom, bathroom with overhead shower & garden.

CC – 0.4 Miles UKC – 2.9 Miles

Map Location: 5

QUERNS PLACE, CANTERBURY, KENT, CT1 1PY

£1050CM (£350PP)



MANAGED BY: iConn

Three bedroom **furnished** student house located close to Christ Church University and local amenities. The property comprises of a sitting room, kitchen with white goods, shower room and garden. Prepayment gas and gas and electric meters in place.

CC– 0.5 Miles UKC – 3.1 Miles

Map Location: 58

For viewings please contact the Castle Street office on 01227 765008

GORDON ROAD, CANTERBURY, KENT, CT1 3PW

£1050PCM (£350PP)



MANAGED BY: iConn

Three bedroom **furnished** house situated within a short walk of the city centre. good size sitting room, spacious kitchen, three double sized bedrooms, bathroom with overhead shower, separate shower room, cellar for storage and garden.

CC – 0.8 Miles UKC – 2.9 Miles

Map Location: 47

WHITSTABLE ROAD, CANTERBURY, KENT, CT2 8DQ

£1060PCM (£353.33PP)



MANAGED BY: iConn

Three bedroom **furnished** house arranged over three floors and offers a sitting room, kitchen, small utility area, good size 1st floor double sized bedroom, 1st floor large single sized bedroom, bathroom with overhead shower, spacious 2nd floor double bedroom, pretty courtyard garden.

CC - 2 Miles UKC - 1.4 Miles

Map Location: 49

ST MICHAELS PLACE, CANTERBURY, KENT, CT2 7HQ

£1080PCM (£360PP)



MANAGED BY: iConn

Three bed **furnished** house with fully fitted kitchen, sitting room/dining area, two double sized bedrooms, one single sized bedroom, bathroom with overhead shower & small garden.

CC – 2 Miles UKC – 1.5 Miles

Map Location: 42

RHODAS CLOSE, CANTERBURY, KENT, CT1 2RE

£1090PCM (£350PP)



MANAGED BY: iConn

Three bed **furnished** house within walking distance to the East Train Station and City Centre, comprises of sitting room, kitchen with white goods, bathroom with overhead shower, good sized garden.

CC – 0.7 Miles UKC – 2.6 Miles

Map Location: 57

For viewings please contact the Castle Street office on 01227 765008

YORK ROAD, CANTERBURY, KENT, CT1 3SX

£1090PCM (£363.33PP)



MANAGED BY: iConn

Three bed **furnished** house with sitting room, kitchen and ground floor bathroom with overhead shower, ground floor double sized bedroom, two further 1st floor double sized bedrooms, one bedroom with walk in dressing room or study and enclosed garden with shed.

CC - 0.8 Miles UKC - 2.9 Miles

Map Location: 52

OLD PARK AVENUE, CANTERBURY, KENT, CT1 1DL

£1090PCM (£363.33PP)



MANAGED BY: iConn

Three bed **furnished** house with sitting room, kitchen with white goods, three double sized bedrooms, bathroom with overhead shower, large garden with garage and off road parking.

CC - 1.5 Miles - UKC - 2.9 Miles

Map Location: 2

ST PETERS GROVE, CANTERBURY, KENT, CT1 2DH

£1090PCM (£363.33PP)



MANAGED BY: iConn

Three bed **furnished** house with fully fitted kitchen, sitting room, two double sized bedrooms, one single sized bedroom, downstairs bathroom with overhead shower, storage room & garden.

CC – 1.5 Miles UKC – 2.3 Miles

Map Location: 22

POUND LANE, CANTERBURY, KENT, CT1 2BZ

£1090PCM (£363.33PP)



MANAGED BY: iConn

Three bed **furnished** house with fully fitted kitchen, sitting room, one double sized bedroom, two single sized bedrooms, downstairs bathroom, separate WC & garden.

CC– 1 Miles UKC – 2.2 Miles

Map Location: 17

For viewings please contact the Castle Street office on 01227 765008

HAVELOCK STREET, CANTERBURY, KENT, CT1 1NP

£1090PCM (£363.33PP)



MANAGED BY: iConn

Three bed **furnished** house with fully fitted kitchen, sitting room, two double sized bedrooms, one single sized bedroom, bathroom with overhead shower & garden. ***GARDENER INCLUDED***

CC – 0.5 Miles UKC – 3.3 Miles

Map Location: 4

ST MICHEALS ROAD, CANTERBURY, KENT, CT2 7HG

£1090PCM (£363.33PP)



MANAGED BY: iConn

Three bed **furnished** house with fitted kitchen, large sitting room, three good sized bedrooms, bathroom with overhead shower, garden, off street parking. Garage for storage.

CC – 2 Miles UKC – 1.5 Miles

Map Location: 44

CROSS STREET, CANTERBURY, KENT, CT2 8AT

£1090PCM (£363.33PP)



MANAGED BY: The Landlord

Three bed **furnished** with sitting room, kitchen, ground floor bathroom, three double sized bedrooms and enclosed garden.

CC - 1.7 Miles UKC - 1.8 Miles

Map Location: 15

ROPER ROAD, CANTERBURY, KENT, CT2 7EQ

£1090PCM (£363.33PP)



MANAGED BY: The Landlord

Three bed **furnished** house with a good size sitting room, spacious dining room, large kitchen, bathroom with overhead shower, three good sized bedrooms and garden.

CC– 1.7 Miles UKC – 1.8 Miles

Map Location: 13

For viewings please contact the Castle Street office on 01227 765008

UPLANDS, CANTERBURY, KENT, CT2 7BL

£1090PCM (£363.33PP)



MANAGED BY: The Landlord

Three bed **furnished** house with fully fitted kitchen, sitting room, two double sized bedrooms, one single bedroom, shower room & garden.

CC – 2.2 Miles UKC – 1.1 Miles

Map Location: 55

KEMSING GARDENS, CANTERBURY, KENT, CT2 7RE

£1100PCM (£366.66PP)



MANAGED BY: iConn

Three bed **furnished** house with a large living room and conservatory area, kitchen with white goods, three double beds, bathroom with overhead shower and large garden with patio area.

CC – 2.3 Miles - UKC – 1.5 Miles

Map Location: 59

ST PETERS LANE, CANTERBURY, KENT, CT1 2BP

£1100PCM (£366.66PP)



MANAGED BY: iConn

Three bed **furnished** house with fully fitted kitchen, sitting room/dining area, two double sized bedrooms, one single sized bedroom, ground floor shower room & garden. ***GARDENER INCLUDED***

CC – 1 Miles UKC – 1.8 Miles

Map Location: 23

TUDOR ROAD, CANTERBURY, KENT, CT1 3SY

£1100PCM (£366.66PP)



MANAGED BY: iConn

Three bedroom **furnished** house with a good size sitting room, large kitchen and utility area, three double sized bedrooms, study room in converted cellar, bathroom with separate shower cubicle and enclosed garden.

CC – 0.8 Miles UKC – 2.9 Miles

Map Location: 27

EDWARD ROAD, CANTERBURY, KENT, CT1 1UH

£1100PCM (£366.66PP)



Three bedroom **furnished** house situated opposite the Christchurch college. The property offers a good size sitting room, kitchen, three good sized bedrooms, large bathroom with shower and enclosed garden.

CC – 0.1 Miles - UKC – 2.6 Miles

Map Location: 11

MANAGED BY: iConn

RUNCIE PLACE, CANTERBURY, KENT, CT2 8DZ

£1100PCM (£366.66PP)



Three bed furnished house with a fully fitted kitchen / living room, ground floor double sized bedroom. Shower room, a further two double sized bedrooms and enclosed garden.

CC– 1.4 Miles UKC – 2 Miles

Map Location: 38

MANAGED BY: iConn

POUND LANE, CANTERBURY, KENT, CT1 2BZ

£1100PCM (£366.66PP)



Three bed **furnished** house with fully fitted kitchen, sitting room, one double sized bedroom, two single sized bedrooms, downstairs bathroom & garden.

CC– 1 Miles UKC – 2.2 Miles

Map Location: 17

MANAGED BY: The Landlord

STURRY ROAD, CANTERBURY, KENT, CT1 1DA

£1130PCM (£376.66PP)



Three bed **furnished** house with fitted kitchen, sitting room, one double sized bedroom, two single sized bedrooms, bathroom with overhead shower, off road parking & garden.

CC – 1.3 Miles UKC – 2.5 Miles

Map Location: 6

MANAGED BY: iConn

For viewings please contact the Castle Street office on 01227 765008

PRETORIA ROAD, CANTERBURY, KENT, CT1 1QL

£1150PCM (£383.33PP)



MANAGED BY: iConn

Three bed **furnished** house with fitted kitchen, large sitting room, three good sized bedrooms, bathroom with overhead shower, garden, off street parking. Prepayment gas and electric meters in place.

CC – 2 Miles UKC – 1.5 Miles

Map Location: 39

HOMERSHAM, CANTERBURY, KENT, CT1 3RG

£1180PCM (£393.33PP)



MANAGED BY: iConn

Three bed furnished house with kitchen with integrated white goods along with a washer dryer and fridge freezer. Sitting room, ground floor cloak room, two single sized bedrooms on the first floor and main bathroom with overhead shower. Master bedroom on the second floor with en-suite shower and a garage. Suitable for MATURE students or professional sharers. Deposit is £500.00 per student.

CC– 1.6 Miles UKC – 3 Miles

Map Location: 60

UTOPIA, DURHAM CLOSE, CANTERBURY, KENT, CT1 3QL

£1230PCM (£410PP)



MANAGED BY: iConn

Three bedroom detached **furnished** house with good size sitting room, fully equipped kitchen, three good size bedrooms, separate cloak room, bathroom with overhead shower, enclosed garden & off road parking for two cars. **CC - Miles UKC - Miles**

Map Location: 30

Four Bedrooms

OLD PARK AVENUE, CANTERBURY, KENT, CT1 1DN

£1340PCM (£335PP)



MANAGED BY: The Landlord

Four bed **furnished** house with sitting room, kitchen with white goods, four double sized bedrooms, single storage/study room, bathroom with overhead shower, garden. ***BROADBAND AND GARDENER INCLUDED***

CC - 1.5 Miles - UKC - 2.9 Miles

Map Location: 2

GORDON ROAD, CANTERBURY, KENT, CT1 3PW

£1340PCM (£352.50PP)



MANAGED BY: iConn

Four bedroom **furnished** house with good size sitting room, spacious kitchen, three double sized bedrooms, one single size bedroom, bathroom with overhead shower, separate shower room, cellar for storage, garden and on street parking requiring no permit. Prepayment gas meter in place.

CC – 0.8 Miles UKC – 2.9 Miles

Map Location: 47

QUERNS PLACE, CANTERBURY, KENT, CT1 1PY

£1350PCM (£337.50PP)



MANAGED BY: iConn

Four bedroom **furnished** house comprising of a sitting room, kitchen with white goods, downstairs WC, three double sized rooms and one single sized room, shower room and garden. Prepayment gas and electric meters in place.

CC– 0.5 Miles UKC – 3.1 Miles

Map Location: 58

ST MARTINS ROAD, CANTERBURY, KENT, CT1 1QW

£1350PCM (£337.50PP)



MANAGED BY: iConn

Four bed **furnished** house. Communal areas include a good sized kitchen with all white goods and a furnished sitting room, main bathroom with bath and overhead shower. Good sized enclosed garden with shed.

CC – 0.5 Miles UKC – 3.6 Miles

Map Location: 7

For viewings please contact the Castle Street office on 01227 765008

STURRY ROAD, CANTERBURY, KENT, CT1 1DA

£1400PCM (£350PP)



MANAGED BY: iConn

Four bed **furnished** house with fitted kitchen, sitting room, one double sized bedroom, three single sized bedrooms, bathroom with overhead shower, off road parking & garden.

CC – 1.3 Miles UKC – 2.5 Miles

Map Location: 6

HAMPSHIRE ROAD, CANTERBURY, KENT, CT1 1SJ

£1400PCM (£350PP)



MANAGED BY: iConn

Four bed **furnished** house with fully fitted kitchen, sitting room, two double sized bedrooms, two single sized bedrooms, shower room. Parking & garden with shed. Pre-payment gas meter in place.

CC – 1 mile UKC – 4.1 miles

Map Location: 3

PETCHELL MEWS, CANTERBURY, KENT, CT1 1LB

£1420PCM (£355PP)



MANAGED BY: iConn

Four bedroom **furnished** house offering kitchen with white goods, sitting room leading to conservatory, ground floor cloakroom, ground floor double sized bedroom, two further 1st floor double sized bedrooms and one single sized bedroom. Bathroom with over head shower, seperate wc. Good sized garden with shed.

Large garden maintained by landlord

CC - 0.7 Miles UKC - 2.5 Miles

Map Location: 54

NURSURY WALK, CANTERBURY, KENT, CT2 7TF

£1420PCM (£355PP)



MANAGED BY: iConn

Four bed **furnished** house with fitted kitchen, sitting room/dining area, lean to/storage area, one double sized bedroom and three single sized bedrooms, bathroom with overhead shower, garden.

CC – 1.5 Miles UKC – 1.8 Miles

Map Location: 37

LANSDOWN ROAD, CANTERBURY, KENT, CT1 3JP

£1430PCM (£357.50PP)



MANAGED BY: iConn

Four bed **furnished** house with fitted kitchen, sitting room, converted cellar, two double sized bedrooms, two single sized bedrooms, bathroom with overhead shower & garden.

CC – 0.4 Miles UKC – 2.9 Miles

Map Location: 5

BEACONSFIELD ROAD, CANTERBURY, KENT, CT2 7HF

£1430PCM (£357.50PP)



MANAGED BY: iConn

Four bed **furnished** house with fitted kitchen, sitting room, two double sized bedrooms, two single sized bedrooms, downstairs shower room and garden.

CC - 1.9 Miles UKC - 1.2 Miles

Map Location: 24

PLUMPTON WALK, CANTERBURY, KENT, CT1 1JN

£1430PCM (£357.50PP)



MANAGED BY: iConn

Four bed **furnished** house with a good size kitchen, spacious sitting room, ground floor cloakroom, ground floor double sized bedroom, two double sized bedrooms and one good sized single bedroom on the first floor, bathroom with overhead shower, enclosed garden and garage. Prepayment gas and electric meters in place.

CC - 0.7 Miles UKC - 2.5 Miles

Map Location: 35

LANCASTER ROAD, CANTERBURY, KENT, CT1 3QE

£1440PCM (£360PP)



MANAGED BY: The Landlord

Four bed **furnished** house with Kitchen, sitting room, three double sized bedrooms, one single sized bedroom, conservatory, two separate cloakrooms, bathroom with overhead shower & garden.

CC – 0.8 Miles - UKC - 2.9 Miles

Map Location: 34

For viewings please contact the Castle Street office on 01227 765008

TUDOR ROAD, CANTERBURY, KENT, CT1 3SY

£1440PCM (£360PP)



MANAGED BY: iConn

Four bed **furnished** house with four good sized bedrooms, sitting room, kitchen with all white goods, bathroom with over head shower and garden.

BROADBAND AND GARDENER INCLUDED

CC – 0.8 Miles - UKC - 2.9 Miles

Map Location: 27

RHODAS CLOSE, CANTERBURY, KENT, CT1 2RE

£1440PCM (£360PP)



MANAGED BY: iConn

Four bed **furnished** house within walking distance to the East Train Station and City Centre, comprises of sitting room, kitchen with white goods, bathroom with overhead shower, good sized garden.

CC – 0.7 Miles UKC – 2.6 Miles

Map Location: 57

POUND LANE, CANTERBURY, KENT, CT1 2BZ

£1440PCM (£360PP)



MANAGED BY: iConn

Four bed **furnished** house with fitted kitchen, sitting room, one double sized bedroom, three single bedrooms, downstairs bathroom with overhead shower, patio garden

CC – 1 Mile UKC – 2.2 Miles

Map Location: 17

PETCHELL MEWS, CANTERBURY, KENT, CT1 1LB

£1440PCM (£360PP)



MANAGED BY: iConn

Four bedroom **furnished** house with a good size kitchen with access out to garden, spacious sitting room, ground floor double sized bedroom, two further 1st floor double sized bedrooms and one single sized bedroom with fitted cupboard. Modern bathroom with overhead shower, separate wc. ***Large garden maintained by landlord***

CC - 0.7 Miles UKC - 2.5 Miles

Map Location: 54

For viewings please contact the Castle Street office on 01227 765008

ST MARTINS ROAD, CANTERBURY, KENT, CT1 1QW

£1440PCM (£360PP)



MANAGED BY: The Landlord

Four bed **furnished** house with a good size sitting room, large modern kitchen, four good sized bedrooms, bathroom and garden.

CC – 0.5 Miles UKC – 3.6 Miles

Map Location: 7

FORRESTER CLOSE, CANTERBURY, KENT, CT1 1DZ

£1440PCM (£360PP)



MANAGED BY: iConn

Four bed **furnished** house with fitted kitchen/diner, sitting room, downstairs w/c, four double sized bedrooms with double beds, all bedrooms have own key, bathroom with separate shower enclosure, enclosed garden with shed, parking at the rear of the property, no permit required.

BROADBAND & GARDENER INCLUDED

CC - 1.5 MILES - UKC - 2.9 MILES

Map Location: 40

UTOPIA, DURHAM CLOSE, CANTERBURY, KENT, CT1 3QL

£1440PCM (£360PP)



MANAGED BY: iConn

Four bedroom detached **furnished** house with good size sitting room, fully equipped kitchen, four good sized bedrooms, separate cloak room, bathroom with overhead shower, enclosed garden & off road parking for two cars. **CC - Miles UKC - Miles**

Map Location: 30

BRAMSHAW ROAD, CANTERBURY, KENT, CT2 7HR

£1440PCM (£360PP)



MANAGED BY: iConn

Four bed **furnished** house with fitted kitchen/diner, three double sized bedrooms, one single sized bedroom, bathroom with overhead shower, separate w/c & garden.

CC – 2.1 Miles UKC – 1.5 Miles

Map Location: 26

STURRY ROAD, CANTERBURY, KENT, CT2 7TE

£1440PCM (£360PP)



MANAGED BY: iConn

Four bed **furnished** house with fitted kitchen, utility room, sitting room, three double sized bedrooms, one single sized bedroom, downstairs bathroom with overhead shower, first floor shower room & large garden.

CC – 1.7 Miles UKC – 3 Miles

Map Location: 6

MARTYRS FIELD ROAD, CANTERBURY, KENT, CT1 3PX

£1450PCM (£362.50PP)



MANAGED BY: The Landlord

Four bed **furnished** house with a good size sitting room, large kitchen, four good sized bedrooms, shower room & garden.

CC - 0.8 Miles UKC - 2.9 Miles

Map Location: 29

CASTLE STREET, CANTERBURY, KENT, CT1 2QD

£1455PCM (£364PP)



MANAGED BY: iConn

Four bed **furnished** 1st floor flat is situated within the city walls and just off of the main High Street. The property offers a good size sitting room, kitchen with white goods, four good sized bedrooms & shower room.

CC – 0.8 Miles UKC – 2.6 Miles

Map Location: 20

ST MICHAELS PLACE, CANTERBURY, KENT, CT2 7HQ

£1465PCM (£366.25PP)



MANAGED BY: iConn

Four bed **furnished** house with open plan kitchen, sitting room/dining area, conservatory, two double sized bedrooms, two single sized bedrooms, bathroom with overhead shower, garden.

CC – 2.1 Miles UKC – 1.4 Miles

Map Location: 42

For viewings please contact the Castle Street office on 01227 765008

ST MICHAELS ROAD, CANTERBURY, KENT, CT2 7HG

£1465PCM (£366.25PP)



MANAGED BY: The Landlord

Four bed **furnished** house with a good size sitting room, large kitchen, ground floor bathroom, four good sized bedrooms and garden. On street parking requiring no permit.

CC - 2 Miles UKC - 1.5 Miles

Map Location: 44

BEACONSFIELD ROAD, CANTERBURY, KENT, CT2 7HF

£1465PCM (£366.25PP)



MANAGED BY: The Landlord

Four bed **furnished** house situated close to UKC and all local amenities. The property offers a good size sitting room, spacious kitchen, bathroom with overhead shower, good size bedrooms and garden. On street parking requiring no permit.

CC - 1.9 Miles UKC - 1.2 Miles

Map Location: 24

MEAD WAY, CANTERBURY, KENT, CT2 8BB

£1465PCM (£366.25PP)



MANAGED BY: iConn

Four bed **furnished** house with fitted kitchen, sitting room/dining area, two double sized bedrooms, two single sized bedrooms, bathroom with overhead shower, parking, garden.

CC - 1.7 Miles UKC - 1.8 Miles

Map Location: 19

MEAD WAY, CANTERBURY, KENT, CT2 8BB

£1472PCM (£368PP)



MANAGED BY: iConn

Four bed **furnished** house situated in the popular area of St Dunstons and close to UKC. The property offers a sitting room, kitchen, four bedrooms, bathroom and garden. ***BROADBAND & GARDENER INCLUDED***

CC - 1.7 miles UKC - 1.8 miles

Map Location: 19

For viewings please contact the Castle Street office on 01227 765008

ST DUNSTANS STREET, CANTERBURY, KENT, CT2 7TF

£1472PCM (£368PP)



MANAGED BY: iConn

Four bed **furnished** house with sitting room, fully fitted kitchen, four large double sized bedrooms, ground floor shower room & garden.

CC – 1.7 miles UKC – 1.8 miles

Map Location: 18

ST DUNSTANS STREET, CANTERBURY, KENT, CT2 7TF

£1472PCM (£368PP)



MANAGED BY: iConn

Four bed **furnished** house with fitted kitchen, sitting room/dining area, three double sized bedrooms, one single sized bedroom, shower room and separate w/c.

CC – 1.7 miles UKC – 1.8 miles

Map Location: 18

HALLETT WALK, CANTERBURY, KENT, CT1 1LA

£1472PCM (£368PP)



MANAGED BY: iConn

Four bedroom **furnished** house with sitting room, kitchen, three double sized bedrooms and one single sized bedroom, bathroom with overhead shower and separate wc.

******The garden is maintained by the Landlord's contractor and the Landlord pays for a cleaning service once a week to all the communal areas******

CC – 0.8 Miles UKC – 2.9 Miles

Map Location: 16

WHITEHALL ROAD, CANTERBURY, KENT, CT2 8BQ

£1472PCM (£368PP)



MANAGED BY: iConn

Four bed **furnished** house offering a fully fitted integrated kitchen, sitting room with dining area, four bedrooms, bathroom with overhead shower, downstairs cloakroom, enclosed garden & off road parking for two cars. Mature students only.

CC - 1.7 miles UKC - 1.8 miles

Map Location: 21

For viewings please contact the Castle Street office on 01227 765008

WHITEHALL ROAD, CANTERBURY, KENT, CT2 8BQ

£1472PCM (£368PP)



MANAGED BY: iConn

Four bed **furnished** house with three double sized bedroom and one single sized bedroom, spacious sitting room, good size kitchen, bathroom with overhead shower, garden and off road parking. **MATURE STUDENTS ONLY. *GARDENER INCLUDED***

CC - 1.7 miles UKC - 1.8 miles

Map Location: 21

BEACONSFIELD ROAD, CANTERBURY, KENT, CT2 7HF

£1472PCM (£368PP)



MANAGED BY: iConn

Four bed **furnished** with good size open plan sitting room with dining area, spacious kitchen, downstairs cloakroom, bathroom with overhead shower and separate WC, two double sized bedrooms, two single sized bedrooms, garden and parking for one car. Garage not included. ***GARDENER INCLUDED***

CC - 1.9 Miles UKC - 1.2 Miles

Map Location: 24

MARTYRS FIELD ROAD, CANTERBURY, KENT, CT1 3PX

£1472PCM (£368PP)



MANAGED BY: iConn

Four bedroom **furnished** house with four good sized bedrooms, sitting room, good size kitchen with white goods, bathroom with overhead shower and garden. ***BROADBAND & GARDENER INCLUDED***

CC - 0.8 Miles UKC - 2.9 Miles

Map Location: 29

GORDON ROAD, CANTERBURY, KENT, CT1 3PW

£1472PCM (£368PP)



MANAGED BY: iConn

Four bed **furnished** house with fitted kitchen, sitting room, dining room, four double sized bedrooms, bathroom with separate shower cubicle and small garden.

CC - 0.8 Miles UKC - 2.9 Miles

Map Location: 47

For viewings please contact the Castle Street office on 01227 765008

CLAREMONT PLACE, CANTERBURY, KENT, CT2 3SU

£1472PCM (£368PP)



MANAGED BY: iConn

Four bed **furnished** house with four good size bedrooms, sitting room, kitchen with white goods, bathroom with overhead shower, and garden.

BROADBAND & GARDENER INCLUDED

CC - 0.8 Miles UKC - 2.9 Miles

Map Location: 28

BRAMSHAW ROAD, CANTERBURY, KENT, CT2 7HR

£1495PCM (£373.75PP)



MANAGED BY: iConn

Four bed **furnished** house with fitted kitchen, sitting room, three double sized bedrooms, one single sized bedroom, bathroom with overhead shower, separate w/c & garden.

CC - 2.1 Miles UKC - 1.5 Miles

Map Location: 26

NEW RUTTINGTON LANE, CANTERBURY, KENT, CT1 1LR

£1500PCM (£375PP)



MANAGED BY: iConn

Four bed **furnished** town house with open plan fitted kitchen / dining area and living room, four double sized bedrooms with double beds, one with ensuite shower room, bathroom with overhead shower, garden & parking for one car. ***LANDLORD MAINTAINS GARDEN***

CC - 0.5 Miles UKC - 3.3 Miles

Map Location: 46

Five Bedrooms

STURRY ROAD, CANTERBURY, KENT, CT2 7TE

£1600PCM (£320PP)



MANAGED BY: iConn

Five bed **furnished** house with fitted kitchen, utility room, sitting room, three double sized bedrooms, two single sized bedrooms, ground floor bathroom with overhead shower, first floor shower room & large garden.

Prepayment electric meter in place. ***GARDENER INCLUDED*** ***FREE USE OF A PS3, WII CONSOLE OR X BOX!!***

CC – 1.7 Miles UKC – 3 Miles

Map Location: 6

BRAMSHAW ROAD, CANTERBURY, KENT, CT2 7HR

£1780PCM (£358PP)



MANAGED BY: iConn

Five bed **furnished** house with kitchen/diner, sitting room, four double sized bedrooms, one single sized bedroom/study room, bathroom with overhead shower, ensuite shower room to upstairs front bedroom & large garden.

CC – 2.1 Miles UKC – 1.5 Miles

Map Location: 26

WINCHEAP, CANTERBURY, KENT, CT1 3TT

£1780PCM (£356PP)



MANAGED BY: iConn

Five bed **furnished** house with a spacious sitting room, kitchen, downstairs shower room, five large double sized bedrooms, bathroom, cellar for storage and garden.

CC - 0.8 Miles UKC - 2.9 Miles

Map Location: 50

For viewings please contact the Castle Street office on 01227 765008

NURSURY WALK, CANTERBURY, KENT, CT2 7TF

£1790PCM (£358PP)



MANAGED BY: The Landlord

Five bed **furnished** house with fitted kitchen, sitting room, three double sized bedrooms, two single sized bedrooms, bathroom with overhead shower, garden.

CC – 1.5 Miles UKC – 1.8 Miles

Map Location: 37

LONGACRE CLOSE, CANTERBURY, KENT, CT2 7JP

£1790PCM (£358PP)



MANAGED BY: The Landlord

Five bed **furnished** house with a good size kitchen, large sitting room, ground floor cloak room, five good size bedrooms, bathroom with overhead shower and garden.

CC - 1.5 Miles UKC - 1.8 Miles

Map Location: 32

MEAD WAY, CANTERBURY, KENT, CT2 8BB

£1790PCM (£358PP)



MANAGED BY: iConn

Five bed **furnished** house, spacious sitting room, modern kitchen, four double size bedrooms, one single size bedroom, bathroom with overhead shower, enclosed garden and ample off road parking. ***BROADBAND & GARDENER INCLUDED***

CC– 1.7 miles UKC – 1.8 miles

Map Location: 19

HILLVIEW ROAD, CANTERBURY, KENT, CT2 8EX

£1790PCM (£358PP)



MANAGED BY: iConn

Five bedroom **furnished** house, refurbished throughout with new kitchen, open plan dining room / sitting room, four double sized bedrooms and one good size single bedroom, new bathroom with shower unit, separate wc additional en-suite shower unit in the main bedroom. Parking for two cars. ***Large garden maintained by the landlord's contractor***

CC– 2.5 Miles UKC – 1.6 Miles

Map Location: 56

For viewings please contact the Castle Street office on 01227 765008

ST MARTINS ROAD, CANTERBURY, KENT, CT1 1QP

£1790PCM (£358PP)



MANAGED BY: iConn

Five bed **furnished** house with fitted kitchen/diner, sitting room, four double sized bedrooms, one single sized bedroom, first floor bathroom with overhead shower, second bathroom to third floor and large garden.

GARDENER ATTENDS TO MOW GRASS

CC – 0.5 Miles UKC – 3.6 Miles

Map Location: 7

ST STEPHENS COURT, CANTERBURY, KENT, CT2 7JP

£1790PCM (£358PP)



MANAGED BY: iConn

Five bed **furnished** house with spacious sitting room/dining room, good size kitchen, four double sized bedrooms, one good single size room, bathroom with overhead shower unit, cloak room, enclosed garden.

LANDLORD MAINTAINS GARDEN

CC – Miles UKC – Miles

Map Location: 43

Six Bedrooms

MILL LANE, CANTERBURY, KENT, CT2 8NU

£2400PCM (£400PP)



MANAGED BY: iConn

Six bed **furnished** house with a good size kitchen, sitting room, three ground floor double sized rooms, ground floor shower room, two double sized rooms on the first floor and one good sized single bedroom with built in storage, first floor shower room and large garden with shed maintained by Landlord.

CC – 1.7 Miles UKC – 2.2 Miles

Map Location: 36

WHITSTABLE ROAD, CANTERBURY, KENT, CT2 8DG

£2400PCM (£400PP)



MANAGED BY: iConn

Six bed **furnished** house based over four floors offering spacious accommodation, spacious sitting room, large study/storage room, fully fitted kitchen, utility room, five double sized bedrooms, one good sized single bedroom, one bedroom has ensuite shower wet room, main bathroom with overhead shower plus one separate WC, enclosed garden.

CC – 1.8 Miles UKC – 1.5 Miles

Map Location: 49

WHITSTABLE ROAD, CANTERBURY, KENT, CT2 8DG

£2610PCM (£435PP)



MANAGED BY: iConn

Six bed **furnished** house benefiting from having two reception rooms, kitchen with white goods, ground floor cloakroom, four double bedrooms with own en-suite and two single bedrooms with own en-suite. It has a good size garden, 5 parking spaces to the rear and is close to all local pubs, restaurants, shops and Canterbury West train station. On UKC bus route!!!

CC – 1.8 Miles UKC – 1.5 Miles

Map Location: 49

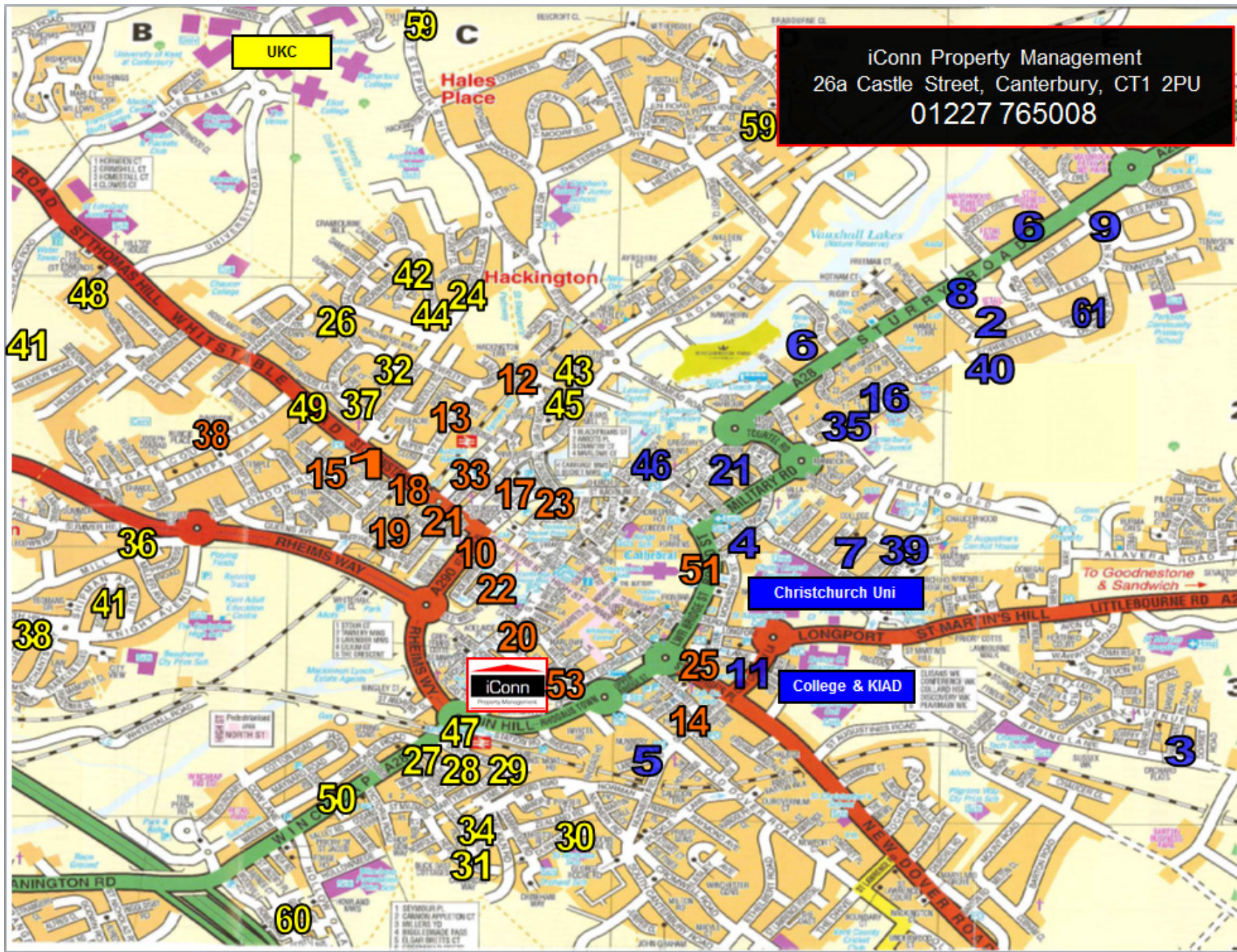
For viewings please contact the Castle Street office on 01227 765008

Map Locations:

1	Church street	31	Heaton Road
2	Old Park Avenue	32	Longacre Close
3	Hampshire Road	33	Kirbys Lane
4	Havelock Street	34	Lancaster Road
5	Lansdown Road	35	Plumpton Walk
6	Sturry Road	36	Mill Lane
7	St Martins Road	37	Nursery Walk
8	Old Park Court	38	Runcie Place
9	Reed Avenue	39	Pretoria Road
10	Black Griffin Lane	40	Forrester Close
11	Edward Road	41	Roman Row
12	Holters Mill	42	St Michaels Place
13	Roper Road	43	St Stephens Court
14	The Flat, Oaten Hill	44	St Michaels Road
15	Cross Street	45	St Stephens Close
16	Hallett Walk	46	New Ruttington Lane
17	Pound Lane	47	Gordon Road
18	St Dunstans Street	48	Glen Iris Avenue
19	Mead Way	49	Whitstable Road
20	Castle Street	50	Wincheap Road
21	White Hall Road	51	The Old Slaughter House
22	St Peters Grove	52	York Road
23	St Peters Lane	53	Willoughby Court
24	Beaconsfield Road	54	Petchell Mews
25	Old Dover Road	55	Uplands
26	Bramshaw Road	56	Hillview Road
27	Tudor Road	57	Rhodaus Close
28	Claremont Place	58	Querns Place
29	Martyrs Field Road	59	Kemsing Gardens
30	Utopia	60	Homersham

	Town Houses
	Christchurch Uni / KIAD Houses
	UKC Houses

For viewings please contact the Castle Street office on 01227 765008



For viewings please contact the Castle Street office on 01227 765008